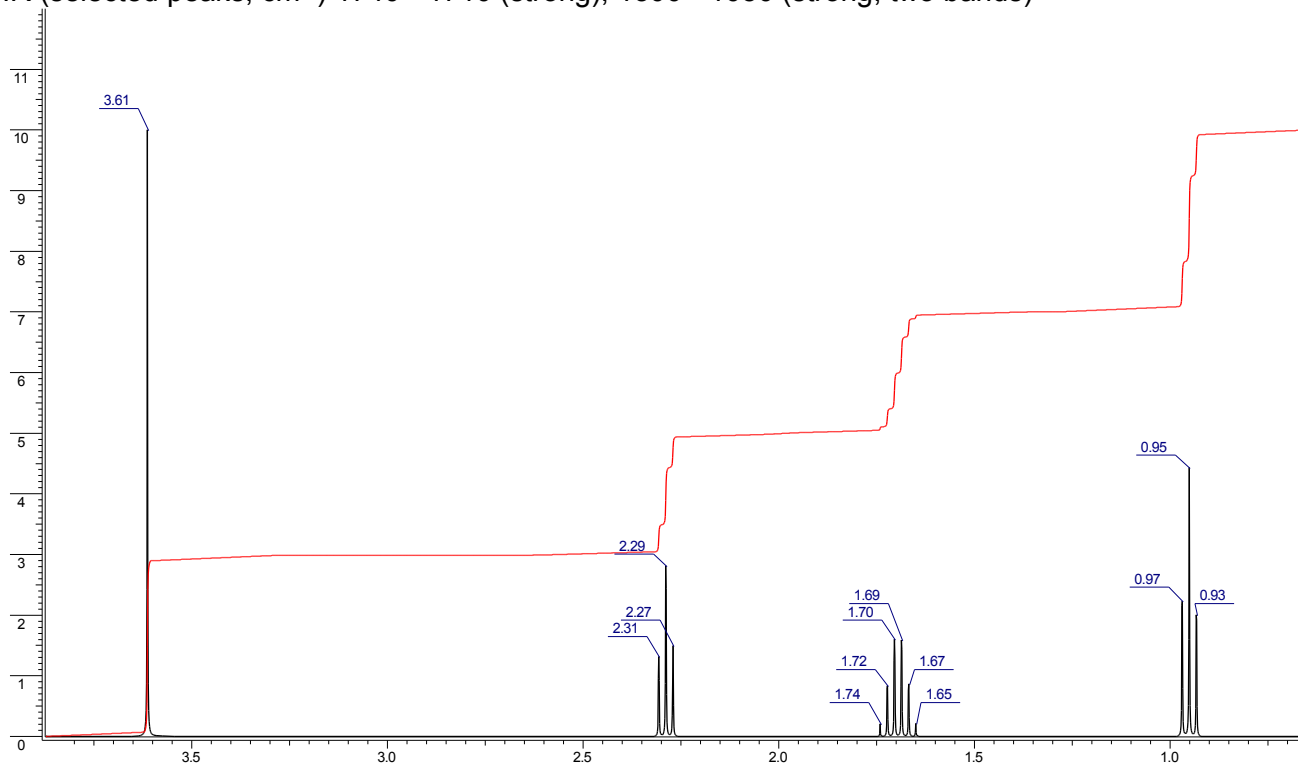


(10 pts.) Propose a structure for each of the following compounds, based on the spectroscopic data provided. For full credit, assign as much of the provided spectroscopic data as needed to unambiguously confirm your proposed structure.

A)  $C_5H_{10}O_2$   $^1H$  NMR  $\delta$  3.61 (s, 3H), 2.29 (t, 2H), 1.69 (sextet, 2H), 0.95 (t, 3H).

IR (selected peaks,  $cm^{-1}$ ) 1740 - 1710 (strong), 1300 - 1050 (strong, two bands)



B)  $C_8H_9ClO$   $^1H$  NMR  $\delta$  7.22 (2H, d), 6.58 (2H, d), 4.09 (2H, q), 1.43 (3H, t).

